



ELIT QCC40-63

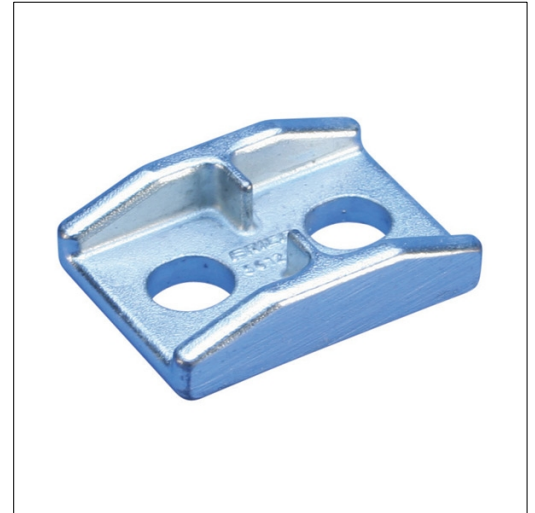
ELIT QCC 40/63 Clamp

Technical description

Clamp for connecting flexibar with a minimum of 40mm and a maximum of 63mm to solid copper busbar. Flexibar less than 5 mm = 1 clamp. Flexibar greater than 5 mm = 2 clamps.

Advantages:

- Compact space-saving design
- Installs quickly and easily
- Connects flexible rails to punched busbar
- Allows excellent electrical contact
- Ideal for on-site modifications



Product name/ Art.nr/ GTIN	ELIT QCC40-63/ 20300095/ 7070811205676
According to:	---
Type of accessory/spare part	Mounting plate
Accessory	Yes